

**ANNUAL
MEETING**

**Wine and dessert
party**

Nov. 6 at 7:30 PM

Join us on Thursday, Nov. 6, at the **Moscow Community Center** for the annual membership meeting and fundraiser for the Palouse Land Trust. Share dessert and coffee or a glass of wine with board members, local landowners, and other people interested in conserving open space, water quality and wildlife habitat in the Palouse.

Speakers:

Denise Ortiz of the **Pullman Environmental Quality Commission** will show slides of the **Maggie Forest**. Come see what a nearly pristine Palouse Prairie looks like.

Randy Rice of **Moscow Parks and Recreation Department** will talk about how the **Berman gift** will become a bubble park.

Hear about our current projects from **John Norton** of the **Palouse Land Trust**.

Find out how to get involved in current and future projects with your land trust. **Penny Morgan** of the **Palouse Land Trust** will discuss how committed but busy people can make a difference for the future of the Palouse.

**Palouse prairie
remnants to be mapped**

Bertie Weddell, PLT advisory board member, and **Juanita Lichthardt** will be locating, describing, and prioritizing remnants of native bunchgrass communities in the Palouse. The U.S. Bureau of Land Management funded this project. The Palouse Land Trust, the Inland Northwest Land Trust (INLT), and the Idaho Nature Conservancy (TNC) will contribute hours, travel support, maps, and other resources.

More than 94% of the original grasslands in the Palouse are gone. Remnant native bunchgrass communities are found in **Whitman, Latah** and surrounding counties, but they are threatened by weeds, neglect, and tree encroachment.

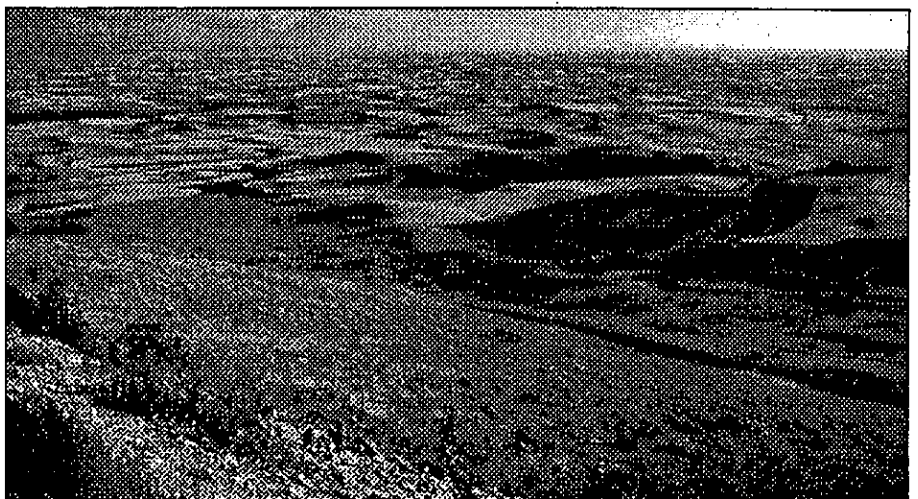
Sites where 3 of the 9 plant species endemic to the Palouse will be mapped. Good quality grassland communities will be described and prioritized for protection efforts.

**160 acres protected near
Coeur d'Alene**

Mrs. **Gertrude Hanson** is the owner of 160 acres of open woodlands, meadows, and streams adjoining the city of **Coeur D'Alene** near **Cougar Bay**. Mrs. Hanson's grandfather homesteaded the land. The Hansons chose the Palouse Land Trust to partner with the **Inland Northwest Land Trust** in preparing and holding the conservation easement. It is stunning that a property of this size and pristine character, containing such a variety of wildlife habitat is to be found literally within a stone's throw of **Coeur d'Alene**.

Last spring, **Archie George, John Shea, Gerry and Harley Wright, John Norton,** and PLT intern **Wanda Burns**, worked with the **Inland Northwest Land Trust** to do the baseline documentation for this conservation easement.

The Palouse Land Trust is proud to be working with the **Hanson family** on this project.



What did PLT accomplish last year?

Conserving the open space, wildlife habitat, water quality, and scenery of the Palouse is our focus. In our second year, sharing information and bringing people together continue to be our main activities.

We accepted donation of two conservation easements and are negotiating five more. Local landowners and organizations trust us to facilitate agreements that govern the future of their land for perpetuity.

In the last year, we've **worked with 12 individual landowners seriously** considering using conservation easements to help them meet their goals for protecting open space, agricultural and forest land, scenic values, and wildlife habitat. This important, low profile work is usually done in confidence. We share information about conservation easements and other planning tools, and make referrals.

We made presentations to ten different local groups about the many options landowners have when they want to protect their land and what makes it special to them.

We help landowners reach their goals for their land. Many people and organizations welcome our existence. Talking to people about conservation easements and other options is the important work for our members.

Current Projects

Pullman's "Magpie Forest"

The "Magpie Forest" is well known to Pullman. It contains one of the pristine remnants of the Palouse prairie. The property is for sale by J. J. Streibick of Lewiston, Idaho. Because it is located on the northern edge of Pullman, development pressures are high. The city of Pullman Environmental Quality Commission asked the Palouse Land Trust to work to save this property on behalf of the commission and others in the community who recognized its biological significance and current value to the community as open space. Mr. Streibick is interested in selling the 10+acres for \$150,000. At the request of the Palouse Land Trust, Mr. Streibick agreed to suspend all sales activity temporarily to allow the City of Pullman and community organizations to raise local funds for the purchase.

Work continues on this project. For those interested in the current status of this property, please contact the Pullman Environmental Quality Commission.

Linear Task Force includes Berman easement in proposal

Katrina Berman dreamed of a park when she granted a conservation easement to PLT and then donated land to the City of Moscow last year. Those dreams are coming true.

The Linear Park Task Force included a bubble park in their recent proposal to the City of Moscow. In keeping with the conservation easement, only native plants will be used, and the land will not be graded flat.

Berman baseline documentation complete

Thanks to the efforts of Wanda Burns and Patrick Duetting, PLT interns, the baseline documentation of conservation values is now complete for the Berman easement. Through photographs, maps and narrative, the current and past vegetation and land use were described. This is required to justify conservation values and to provide a record should enforcement of the easement terms be necessary.



People at the Palouse Land Trust

Changes among the advisors and directors

We welcome Roger Blanchard and Steve Drown to the advisory board. John Shea joined and worked hard for the board this year but is now moving out of the area.

Other members of our advisory board are Stephen Bishop, Nick Crookston, Bill Goolsby, Kirk Harden, Ken Houska, Jay Pengilly, Jack Porter, Janice Smith-Hill, Bill Venosdel, Bertie Weddell, and Jim Weddell.

Margrit von Braun has left the advisory board to become one of the directors. Cindy Fisher, member of the board of trustees since the Palouse Land Trust was founded in 1995, will leave the board. We thank her for organizing our annual meetings, raising money, and working with landowners.

Other members of the board of directors are John Norton (President), Archie George, Charles Graham, Penny Morgan, and Gerry Wright.

Jay Pengilly attends national rally

Jay Pengilly just returned from the National Land Trust rally in Savannah, Georgia. Together with people from the more than 1000 land trusts in the country, he learned from tax and planning experts and from landowners about

ways to make PLT more effective. PLT won a \$750 scholarship from the Northwest Land Trust Alliance office to help Jay pay his costs of attending.



Our wonderful interns

Three University of Idaho students have devoted many hours of painstaking effort to PLT. Marty Anderson, a third-year law student, researched law and easements. Wanda Burns and Patrick Duetting mapped vegetation and took pictures to document current conservation values. All three worked with individual landowners and board members. Thanks!

Thanks, thanks, thanks

To the many individual landowners and organizations who have asked us for information, we thank you for your interest.

To the many organizations who have referred people to us or invited us to join them on projects: City of Moscow, Pullman Civic Trust, Elk River Recreation District.

To the dedicated members of our advisory board and board of trustees.

To all of those who made our first annual meeting a success. They include the Wine Company of Moscow and the Moscow Hotel. Nancy Mack, Randy Rice, Juanita Lichthardt and Jay Pengilly gave presentations. Others made desserts. And to all who attended, listened, and asked questions, we thank you for your enthusiasm and support.

To our members who volunteer and support our efforts financially.

BECOME A MEMBER OF THE PALOUSE LAND TRUST

- I want to be a member. Here is my payment of dues:
 ___ \$10 General ___ \$25 Contributing ___ \$50 Sustaining
- Please send more information on conservation easements and the Palouse Land Trust
- I want to contribute in the amount of _____

Name _____

Address _____

Telephone number _____

e-mail address _____

Conservation easements for farms and forests

Conservation easements are one of the ways farmers and foresters can protect and conserve open space, wildlife habitat, and favorite views. Conservation easements are legal agreements between a landowner and a land trust that permanently limit uses of land. Easements are written to protect open space, scenic values, wildlife habitat, or other conservation values. Because they are very flexible, conservation easements can allow continued agricultural or forest production or limited development. The landowners continue to own and use their land. Landowners can sell their land or pass it on to their heirs. Like road easements, conservation easements are permanently attached to deeds.

Conservation easements are widely used by landowners to plan the future for their land and their families. In this way, conservation easements can help landowners and their families:

- Protect what is special about their land
- Pass land from one generation to the next with reduced inheritance taxes
- Gain significant income and estate tax advantages
- Control future development and uses of their land

For More Information

The Palouse Land Trust, 109 S. Washington, Moscow, ID 83843 or 208-882-5248. We'll offer free and confidential answers to questions you have. Most of the work we do is with local, individual landowners.

The American Farmland Trust is dedicated to the conservation of agricultural resources. AFT [<http://farm.fic.niu.edu/aft/aft/home/html>] works to prevent the loss of productive farmland and to promote farming practices that are compatible with the environment. They also publish American Farmland magazine.

The Pacific Forest Trust works with owners of large tracts of forest land that are actively managed for timber production. They sponsor educational programs and can offer advice for combining production and conservation.

The Trust for Public Land [<http://www.igc.apc.org/tpl/>] is a national non-profit organization dedicated to the conservation of land for parks, gardens, natural areas and open space. Look here for an excellent list of links to related sites on the world wide web.

PALOUSE LAND TRUST

5 KENWORTHY PLAZA

109 SOUTH WASHINGTON

MOSCOW, ID 83843

ANNUAL MEETING

Wine and dessert party

Nov. 6 at 7:30 PM

Moscow Community Center